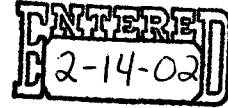


United States Department of the Interior  
National Park Service



NATIONAL REGISTER OF HISTORIC PLACES  
REGISTRATION FORM

=====

1. Name of Property

=====

historic name: **Louis Schmitt House and Store**

other name/site number: **Ohio Historic Inventory # SUM-3099-19**

=====

2. Location

=====

street & number: **2967 Hickory Street**

not for publication: N/A

city/town: **Clinton**

vicinity: X

state: OH county: **Summit**

code: **153**

zip code: **44216**

=====

3. State/Federal Agency Certification

=====

As the designated authority under the National Historic Preservation Act of 1966, as amended, I hereby certify that this   x   nomination \_\_\_\_\_ request for determination of eligibility meets the documentation standards for registering properties in the National Register of Historic Places and meets the procedural and professional requirements set forth in 36 CFR Part 60. In my opinion, the property   x   meets \_\_\_\_\_ does not meet the National Register Criteria. \_\_\_\_\_ See continuation sheet.

Barbara Pave Dept. Head Planning, Inventory & Registration October 16, 2001  
Signature of certifying official Date

Ohio Historic Preservation Office -- OH SHPO  
\_\_\_\_\_  
State or Federal agency and bureau

In my opinion, the property \_\_\_\_\_ meets \_\_\_\_\_ does not meet the National Register criteria. \_\_\_\_\_ See continuation sheet.

Signature of commenting or other official

Date

State or Federal agency and bureau

4. National Park Service Certification

I, hereby certify that this property is:

entered in the National Register  
 See continuation sheet.  
 determined eligible for the  
National Register  
 See continuation sheet.  
 determined not eligible for the  
National Register  
 removed from the National Register

other (explain): \_\_\_\_\_

Signature of Keeper

Date of Action

5. Classification

Ownership of Property: **Private**

Category of Property: **Building(s)**

Number of Resources within Property:

Contributing	Noncontributing	
<u>  2  </u>	_____	buildings
_____	_____	sites
_____	_____	structures
_____	_____	objects
<u>  2  </u>	_____	Total

Number of contributing resources previously listed in the National Register:   0

Name of related multiple property listing: **Canal, Railroad, and Industrial Resources of the Village of Clinton/Warwick.**

=====  
6. Function or Use  
=====

Historic: **Commercial/Domestic** Sub: **Restaurant/Single Dwelling**

Current : **Vacant**

Sub: \_\_\_\_\_  
\_\_\_\_\_  
\_\_\_\_\_

=====  
7. Description  
=====

Architectural Classification: **Gable-fronted Vernacular**

Other Description:

Materials: foundation **Sandstone** roof: **Asphalt**  
walls **Wood** other: \_\_\_\_\_

Describe present and historic physical appearance.   X   See continuation sheet.

=====  
8. Statement of Significance  
=====

Certifying official has considered the significance of this property in relation to other properties:   LOCAL  .

Applicable National Register Criteria: **A**

Criteria Considerations (Exceptions) : **N/A**

Areas of Significance: **Commerce**  
\_\_\_\_\_  
\_\_\_\_\_

Period(s) of Significance: **1901-1908**

Significant Dates: **1901**

Significant Person(s): **N/A**

Cultural Affiliation: **N/A**

Architect/Builder:  **Unknown**

State significance of property, and justify criteria, criteria considerations, and areas and periods of significance noted above.  
 See continuation sheet.

=====  
9. Major Bibliographical References  
=====

See continuation sheet.

Previous documentation on file (NPS):

- preliminary determination of individual listing (36 CFR 67) has been requested.
- previously listed in the National Register
- previously determined eligible by the National Register
- designated a National Historic Landmark
- recorded by Historic American Buildings Survey # \_\_\_\_\_
- recorded by Historic American Engineering Record # \_\_\_\_\_

Primary Location of Additional Data:

- State historic preservation office
- Other state agency
- Federal agency
- Local government
- University
- Other -- Specify Repository: \_\_\_\_\_

=====  
10. Geographical Data  
=====

Acreage of Property: **1.08**

UTM References: Zone Easting Northing      Zone Easting Northing

1) <b>17      446180   4530480</b>	3)
2)	4)

     See continuation sheet.

Verbal Boundary Description: \_\_\_ See continuation sheet. The building is located on the north side of Hickory Street on Warwick Section 18, Lot 31 (NE M) Warwick Road, Franklin Township, Summit County.

Boundary Justification: \_\_\_ See continuation sheet. The nominated property contains the building (Louis Schmitt House and Store) that is historically associated with the Industrial Era heritage of the Village of Clinton and continues to retain its historical integrity.

=====  
11. Form Prepared By  
=====

Name/Title: Sam Tamburro, Historian for the Village of Clinton

Organization: NPS/ Cuyahoga Valley NP Date:2/01

Street & Number: 15610 Vaughn Road Telephone: (330) 657-2096

City or Town: Brecksville State: OH ZIP:44141

=====  
Additional Documentation  
=====

Continuation Sheets

**Maps**

A USGS map indicating the property's location.

Figure 1 Site & Photograph Map

Figure 2 First Floor Plan

Figure 3 Second Floor Plan

Figure 4 Historic Photograph

**Photographs**

United States Department of the Interior  
National Park Service

NATIONAL REGISTER OF HISTORIC PLACES  
CONTINUATION SHEET

Section number 7

Page 6

---

Louis Schmitt House & Store  
Village of Clinton  
Summit County, Ohio

Description

The Louis Schmitt House and Store (hereafter referred to as store) is located on the north side of Hickory Street in the Village of Clinton. The store is "banked" into a moderately sloping hillside. The grassy lot has a heavy treeline along the east, north, and south edges of the lot. A privy is located to the west of the store. The privy is considered a contributing resource (photo 10).

Build in 1901, the Schmitt Store is a front-gabled, two-story, balloon-frame building in the Folk Queen Anne style. The building is clad with narrow wood drop (novelty) siding, and the roof is covered with asphalt tab shingles. A chimney is located off center within the roof's surface on the west elevation. Full-sized windows are two-over-two, double-hung sash with plain-faced surrounds. There is a small, square window in the gable apex of the façade, a characteristic element of the Queen Anne style (photo 1 and 2).

The façade elevation contains a second-story porch that extends the entire length of the façade (photo 1 and 2). The first floor of the store contains a recessed central entryway flanked by large commercial front display windows with wood panels beneath the lights (photo 3). The windows are currently covered with plywood sheets. The fenestration pattern is window-door-window. Metal posts support the second-story porch (photo 3). Flared, cut-sandstone walls are located on the east and west side of the façade elevation. The walls are approximate 3.5 feet high and project out approximately 15 feet from the façade of the structure (photo 1 and 2). There is also a set of concrete steps to the east of the store's façade (photo 1 and 2).

United States Department of the Interior  
National Park Service

NATIONAL REGISTER OF HISTORIC PLACES  
CONTINUATION SHEET

Section number 7

Page 7

---

Louis Schmitt House & Store  
Village of Clinton  
Summit County, Ohio

The fenestration pattern of the second story is the same as the first floor (w-d-w) and includes two large display windows flanking a central five-panel door. The second-story shed roofed Description (continued)

porch contains four turned spindle posts with chamfered edges. The porch roof's east and west elevations' fascia contain a sawtooth treatment (photo 2).

The store's west elevation has 4 bays with a door located near the rear (north) of the structure (photo 7 and 8). The west elevation's fenestration pattern is window-window-window-door. The door opening is currently boarded-up.

The store's east elevation also contains 4 bays with a door situated near the rear (north) elevation (photo 4 & 5). The east elevation's fenestration pattern is window-window-door-window.

The store's north (rear) elevation has a one-story shed roofed addition, which served as the kitchen (photo 8). The addition spans approximately two-thirds the length of the original structure's north elevation along the east corner. The addition is clad with narrow siding similar the core structure and a window is located in the center of addition's north elevation. The addition's roof is covered with asphalt shingles. A door is situated in the northwest corner of the core structure's north elevation.

The store's foundation is combination of sandstone, clay tile block and concrete block. The first floor contains some of its original fabric including a bead-board treatment on the ceiling (figure 3). There is also a "dumb-waiter" that dates from the original construction of the building (photo 9). A set of stairs are located on the northwest corner of the room that lead to the second floor.

United States Department of the Interior  
National Park Service

NATIONAL REGISTER OF HISTORIC PLACES  
CONTINUATION SHEET

Section number 7

Page 8

---

Louis Schmitt House & Store  
Village of Clinton  
Summit County, Ohio

The second floor's massing consists of four rooms including the addition serving as the kitchen (figure 4). Several of the Description (continued)

second-story rooms contain a vertical bead-board wainscoting with a horizontal bead-board treatment that extends to the ceiling. The floors are oak (painted red) and several of the rooms have large baseboards moldings that appear to be original. The second floor also contains original doors and windows.

An eave-oriented privy is located northwest of the store. The privy is clad with drop siding and the roof is covered with asphalt shingles (photo 10).



United States Department of the Interior  
National Park Service

NATIONAL REGISTER OF HISTORIC PLACES  
CONTINUATION SHEET

Section number 7

Page 9

---

Louis Schmitt House & Store  
Village of Clinton  
Summit County, Ohio

Photographs

The following information is the same for all photographs.

Name of Property: Louis Schmitt House and Store

County and State: Summit County, Ohio

Photographer: Sam Tamburro

Date of Photograph: May 1999, January 2000.

Location of Negatives: Cuyahoga Valley National Recreation Area

1. Schmitt House & Store, façade elevation, facing north.
2. Schmitt House & Store, façade elevation, facing north.
3. Schmitt House & Store, front door (first floor), facing north.
4. Schmitt House & Store, east elevation, facing west.
5. Schmitt House & Store, southeast elevation, facing northwest.
6. Schmitt House & Store, southwest elevation, facing northeast.
7. Schmitt House & Store, southwest elevation, facing northeast.
8. Schmitt House & Store, rear (north) elevation, facing west.
9. Schmitt House & Store, first floor interior southeast corner, facing southeast.
10. Schmitt privy, east elevation, facing west.

United States Department of the Interior  
National Park Service

NATIONAL REGISTER OF HISTORIC PLACES  
CONTINUATION SHEET

Section number 8

Page 10

---

Louis Schmitt House & Store  
Village of Clinton  
Summit County, Ohio

Statement of Significance

The Schmitt House & Store meets the registration requirements for properties eligible under Criteria A as specified in the Canal, Railroad, and Industrial Resources of Clinton/Warwick Multiple Property Documentation Form (Clinton MPD).

This property is being nominated under Criterion A for its association with commercial development of Warwick during the "Railroad Era" and the "Mining and Industrial Era." The Schmitt Store served as a beer garden and grocery store for many of the laborers, especially miners, in the community. The store also functioned as a gathering space for Warwick's working class and immigrants. Patrons were able to run tabs for groceries until payday, providing a service for a new and transitional workforce. The Schmitt Store was one of the first retail businesses in Warwick.

Historical Development

In 1880 Louis Schmitt emigrated from Liesdorf, Germany to the United States in 1885 and settled in the Warwick area. In 1885, Schmitt married Barbara Stoltz, also a recent immigrant from Germany.<sup>1</sup> According to U.S. Census records the Schmitts had 2 sons and three daughters by 1900.

By 1895, Schmitt purchased the property of Hickory Street in Warwick and in 1901 built the front-gabled house/store on the site.<sup>2</sup> The building originally functioned as the residence for the Schmitt Family.

---

<sup>1</sup> 1900 U.S. Census, Schedule of Population, Summit County, Franklin Township.

<sup>2</sup> 1895-1901 Summit County Tax Auditor's Duplicates.

United States Department of the Interior  
National Park Service

NATIONAL REGISTER OF HISTORIC PLACES  
CONTINUATION SHEET

Section number 8

Page 11

---

Louis Schmitt House & Store  
Village of Clinton  
Summit County, Ohio

Historical Development (continued)

In the 1890s Schmitt entered into a business agreement with Wilhelm Burkhardt, proprietor of Burkhardt Brewing Company in Akron, Ohio. According to The Clinton Story, Burkhardt provided Schmitt an interest free loan to open a beer garden to cater to miners in the Warwick area.<sup>3</sup> Because of the close proximity of Rogues Hollow, miners were a large segment of the population in the area. In fact, records indicate that Schmitt worked as a miner and the 1900 U.S. Census listed his occupation as a coal miner.

Schmitt converted the basement of his house into a beer garden/grocery store for miners. The beer garden served Burkhardt's beer exclusively. A historic photo from the early twentieth century illustrates that the building had a large sign located underneath the banister of the second floor porch on the façade with "Burkhardt's Beer" in large letters (See Figure 1). The sign also indicates that Louis Schmitt was the proprietor. The picture shows that the porch's turned spindle posts had decorative scrolled support brackets.

The apron of the two-story porch contained a sawtooth treatment similar to the east and west fascia. The porch was supported from the first floor by metal posts, which still exist. A metal nail fence surrounded the front of the bar. On the one side of the space was a barroom and the other side was an area to buy groceries. Louis Schmitt's store sold "staples and fancy groceries", fresh and salt meats, coal, and feed.

The Louis Schmitt Store also served as a gathering place for Catholics to hold (celebrate) Sunday Mass. Until St. George's

---

<sup>3</sup> Sandra Walsh Dreurey, The Clinton Story, (Clinton, OH: Clinton Historical Society, 1991), 26.

United States Department of the Interior  
National Park Service

NATIONAL REGISTER OF HISTORIC PLACES  
CONTINUATION SHEET

Section number 8

Page 12

---

Louis Schmitt House & Store  
Village of Clinton  
Summit County, Ohio

Historical Development (continued)

Church was built in 1908-1909, Sunday services were held on the second floor of the Schmitt Store. Schmitt's operation was successful, and he built a large house for his family next to the store. The family's new house burned down in the early twentieth century.

As Warwick developed as an industrial community, its retail needs expanded. Matthias Schmitt, Louis' son, convinced his father to build a new store close to the Warwick Railroad Depot at the center of town.

In 1905, Schmitt moved his shop to the corner of North Division Street and Third Avenue in "downtown" Warwick. The move was successful, and business increased substantially. In 1908, Schmitt built the two-story brick block buildings on North Division Street, which still exist today. The 1910 U.S. census lists Louis Schmitt as a barroom owner.

With the opening of the Schmitt Commercial Block in downtown Warwick, the Schmitt Store on Hickory Street ceased to be a vital business operation. The building has remained in the Schmitt family throughout the twentieth century and was occupied by various tenants over the period. The current owner is Barbara Lee, Schmitt's granddaughter.

Criterion A: Commerce

The Schmitt Store is significant under Criterion A: Commerce for its historical association with the commercial development in Warwick, Ohio. The Schmitt Store was among the first stores in the area and prospered due to the large amount of miners in the community. One of the main railroad lines that connected the Rouges Hollow mining area with Clinton. Most of the area was

United States Department of the Interior  
National Park Service

NATIONAL REGISTER OF HISTORIC PLACES  
CONTINUATION SHEET

Section number 8

Page 13

---

Louis Schmitt House & Store  
Village of Clinton  
Summit County, Ohio

Criterion A: Commerce (Continued)

inhabited by coal miners. Schmitt himself worked as a miner. The store became an important meeting place for miners and other working class people in Warwick.

Most of the community's news and information was verbally communicated in the store. As Warwick became industrialized and the population of the community grew, the needs of the population outgrew the Schmitt Store, which prompted the family to relocate their business to downtown Warwick. The Louis Schmitt Store is an early example of the commercial development of Warwick.

Historic Integrity

The nominated property maintains its integrity of location, design, setting, materials, feeling, and association. The massing design (front gable) of the building is intact enabling it to communicate its historic function as Louis Schmitt's bar/grocery store. The rear kitchen addition to the building, most likely added shortly after the original construction, does not detract from the profile of the building.

The Schmitt Store is in its original location and is not impacted by any new development, which provides for integrity of setting and feeling. The original interior of the building is intact, giving it the "feel" of an early twentieth-century commercial operation.

The store is covered with wood drop siding, the original construction material, and the building contains several Queen Anne elements such as second floor porch, turned spindle posts, and the saw-tooth on the side elevations of the porch.

United States Department of the Interior  
National Park Service

NATIONAL REGISTER OF HISTORIC PLACES  
CONTINUATION SHEET

Section number 9

Page 14

---

Louis Schmitt House & Store  
Village of Clinton  
Summit County, Ohio

Major Bibliographic References

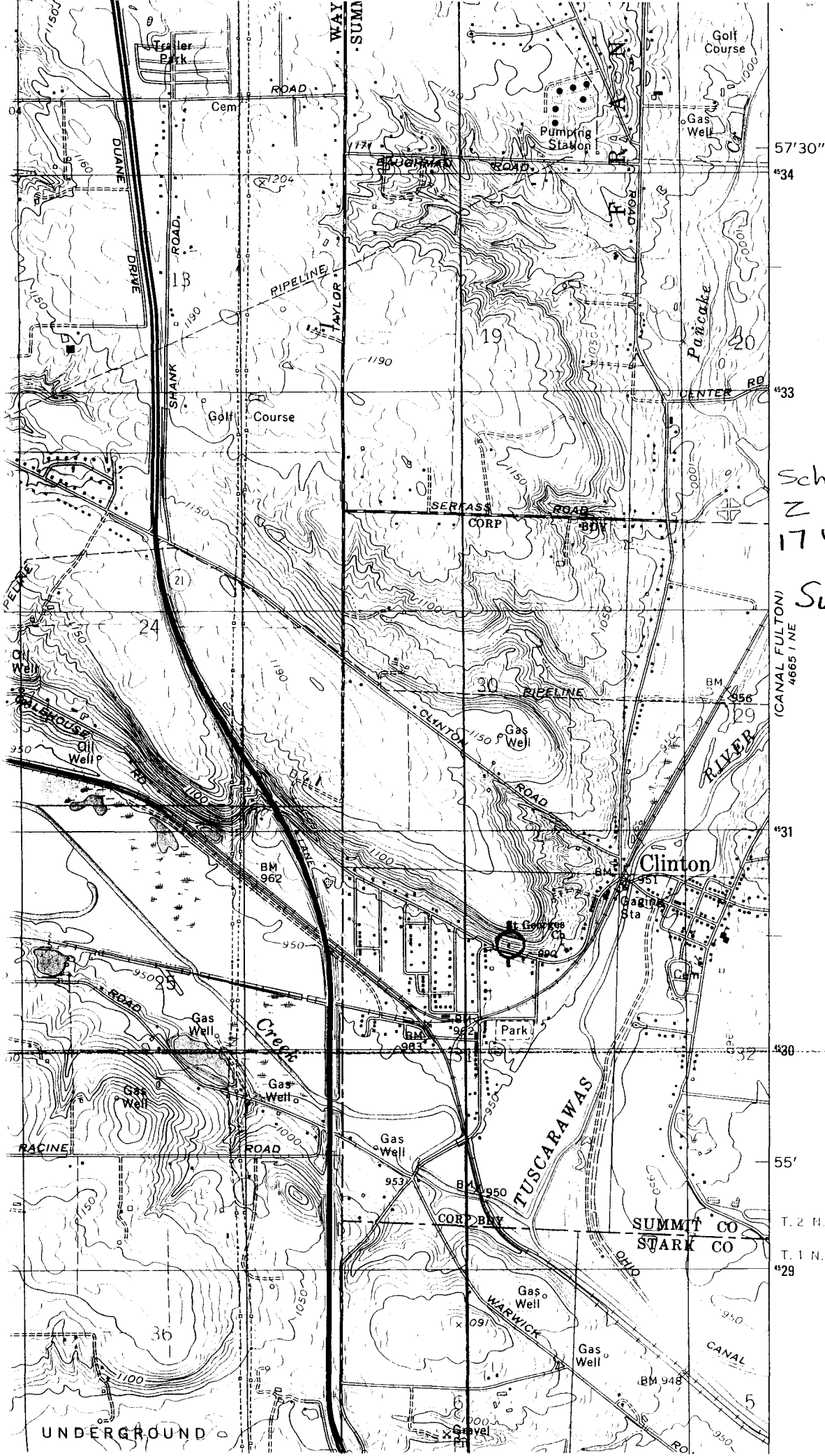
Dreurey, Sandra Walsh. The Clinton Story. Clinton, OH: Clinton Historical Society, 1991.

McAlester, Virginia And Lee. A Field Guide to American Houses. New York: Knopf, 1997.

Ohio & Erie Canal National Heritage Corridor Management Plan  
(Draft). Prepared by ICON Architecture et al. Boston, MA:  
ICON Architecture, 1999.

1895-1901 Summit County Tax Auditor's, Duplicates.

1900-1910 U.S. Census. Schedule of Population.

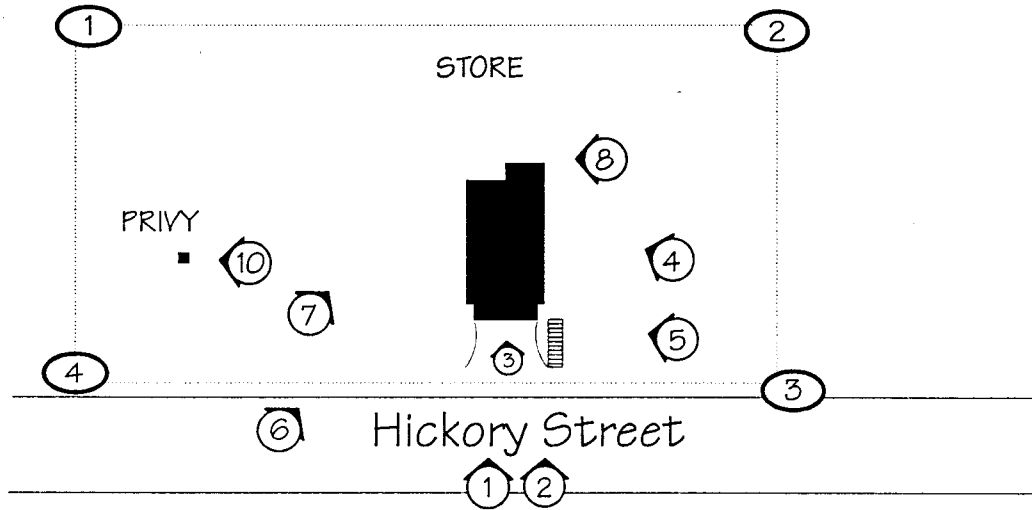


57'30"  
 534  
 533  
 531  
 530  
 55'  
 T. 2 N.  
 T. 1 N.  
 529

Schmitt Store  
 Z E N  
 17 446180 4530 480  
 Summit Co., OH

(CANAL FULTON)  
 4665 1 NE

UNDERGROUND



■ Contributing


  
 NORTH  
 NOT TO SCALE

FIGURE ONE  
 SITE & PHOTO MAP  
 SCHMITT STORE  
 SUMMIT COUNTY, OHIO  
 CLINTON VICINITY  
 JAN 2000



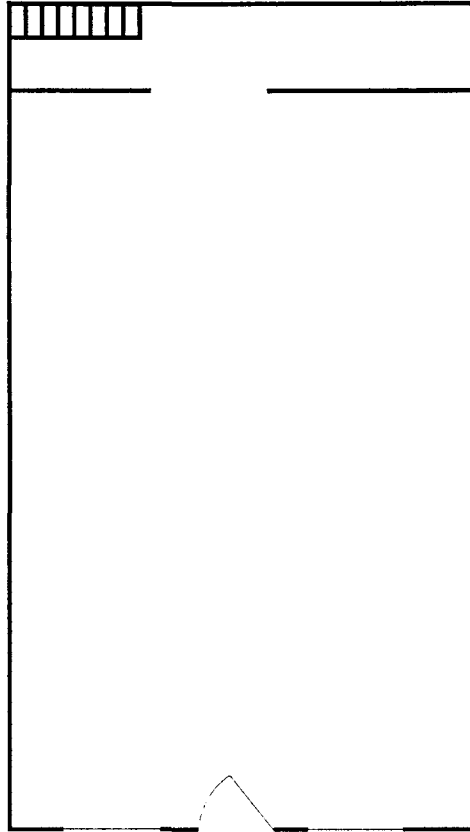

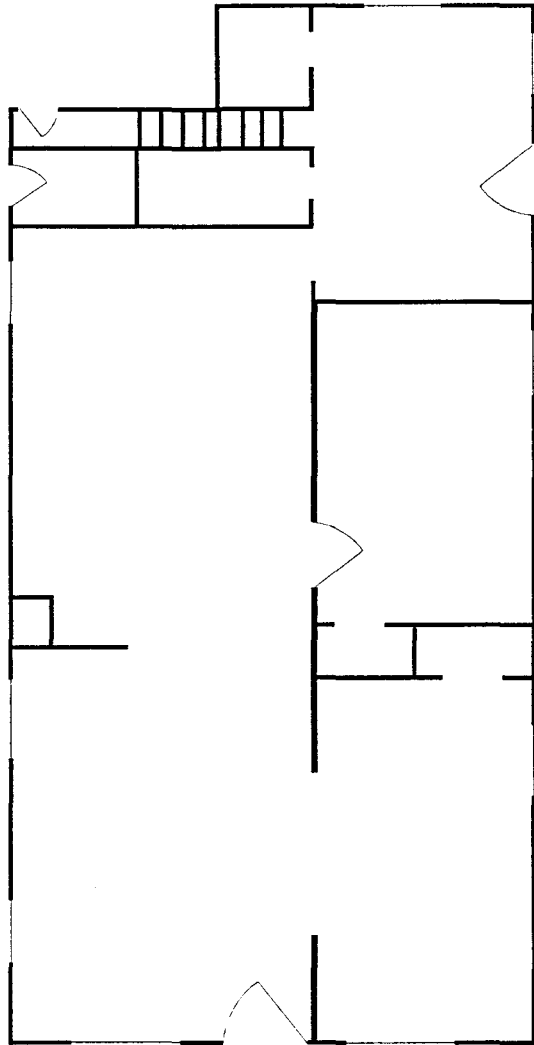


FIGURE TWO  
FIRST FLOOR PLAN  
SCHMITT STORE  
SUMMIT COUNTY, OHIO  
CLINTON VICINITY  
JAN 2000



NORTH  
NOT TO SCALE




  
NORTH  
NOT TO SCALE

FIGURE THREE  
SECOND FLOOR PLAN  
SCHMITT STORE  
SUMMIT COUNTY, OHIO  
CLINTON VICINITY  
JAN 2000

**Ohio Historic Preservation Office**

567 East Hudson Street  
Columbus, Ohio 43211-1030  
614/ 298-2000 Fax: 614/ 298-2037

Visit us at [www.ohiohistory.org/resource/histpres/](http://www.ohiohistory.org/resource/histpres/)



**OHIO  
HISTORICAL  
SOCIETY**  
SINCE 1885

March 7, 2002

Ms. Barbara Lee  
7616 North Second Avenue  
Clinton, Ohio 44216

Dear Ms. Lee:

Congratulations on the recent listing of your property into the National Register of Historic Places!

The National Park Service, United States Department of the Interior listed the **Louis Schmitt House** at 2967 Hickory Street in Clinton, Summit County on February 14, 2002. The nomination was made in connection with a state plan to identify and document prehistoric and historic places in Ohio which qualify for National Register status under provisions of the National Historic Preservation Act of 1966 as amended.

The Ohio Historic Preservation Office (OHPO) is available to advise you in maintaining the historic character of your property. As you know from previous mailings received from this office, there are no restrictions placed on your property following the National Register listing. However, the OHPO strongly encourages owners of historic properties to consider all options before completing work that could damage the structure or impair its historic integrity. Careful planning can facilitate the sensitive incorporation of contemporary alterations with the historic fabric. The OHPO provides free information on how to sensitively rehabilitate and repair historic properties, upon request.

Thank you for your interest in historic preservation and the National Register of Historic Places.

Sincerely,

Barbara A. Powers  
Department Head  
Planning, Inventory, and Registration

Copy: Sam Tamburro, Form Preparer  
Mayor Tom Mayberry, City of Clinton  
Senator Leigh Herington, District # 28  
Representative Twyla Roman, District # 48  
Akron Metropolitan Area Transportation Study  
Paul Graham, Ohio Department of Transportation